

Questions and Answers RFP 25-23 Internal Connections (Hardware)

- a. Q: Are there any existing Cisco 9300 switches that the new ones will be stacked with?
A: No. All existing switches will be replaced with new ones.
- b. Q: Is there a centralized WLC (Wireless LAN Controller) or one at each campus?
A: The new Access Points will be associated to a centralized WLC located at the district network operations center.
- c. Q: Will any VLAN changes be needed?
A: No.
- d. Q: Are backboards in place to mount the cabinets, and if not, who will provide the backboards?
A: The vendor will provide and install the backboards for all new wall mounted cabinets.
- e. Q: Will a lift be needed?
A: Yes, there are Access Points in cafeterias, gyms, and other inside/outside locations that are mounted in high locations. Vendor will provide a lift as needed.
- f. Q: Will the Access Points (AP's) need cabling?
A: All new access points must be installed, associated, and confirmed in the final testing documentation. The replacement of any inoperable AP network cable may be required, included, and installed by the vendor as needed.

22 Additional APs needing to be cabled:

Brewster	6 internal - 3 external
JFK	4 internal - 2 external
Lincoln	2 internal - 2 external
Truman	1 internal - 2 external

- g. Q: Are Access Points a one to one replacement?
A: All existing Access Points will be replaced. New AP device installations will have cabling already in place. The replacement of any inoperable AP network cable may be required, included, and installed by the vendor as needed.
- h. Q: Is any new cabling required for the new Access Points?
A: All existing Access Points will be replaced with new AP devices. Any inoperable AP network cable will be replaced/installed by the vendor as needed.
Clarification: The District E-rate project at these 4 sites has a total of 10 additional access points to be included that will require additional network cable drops to be installed. (Five internal access points and five external access points will be installed)
- i. Q: Will Access Points mounted in gyms require a right angle bracket? If so, what type?
A: No. AP's in the gyms will be mounted flush against the wall.

- j. Q: Do we need to provide a lift for Access Points or will the district provide a lift?
A: The vendor will provide a lift for internal and external installations, as needed.
- k. Q: Do cables that require re-termination need to be tested?
A: Yes, the cables needing re-termination will be tested. Testing results will be expected as part of the closing project documents.
- l. Q: Best practice is to utilize the same brand of patch cables as cabling infrastructure. Is the district confirming use of Eaton patch cables vs. existing Panduit infrastructure?
A: Vendor proposals may contain equivalent equipment or specifications for cost comparison options.
- m. Q: Page 37, paragraph 12 of RFP. We would like to ask if this applies to the manufacturer only or also the service provider? Do you need all parts of any hardware (switches, ups, access points, or other) covered under a 3 year warranty from the manufacturer. The reason for the question is because some manufacturers have different warranty coverages for certain parts and modules.
A: Manufacturer and vendor/integrator warranties should be delineated in the RFP response/proposal.
- n. Q: If possible, would you be able to provide pictures of the cabinets plus re-mount points?
A: Yes, see attached photos of the 9 IDF wall mounted cabinets that will be replaced at the four sites. All new wall mounted cabinets will require a mounted backboard for support and safety. See attached photos for reference below.

Photos

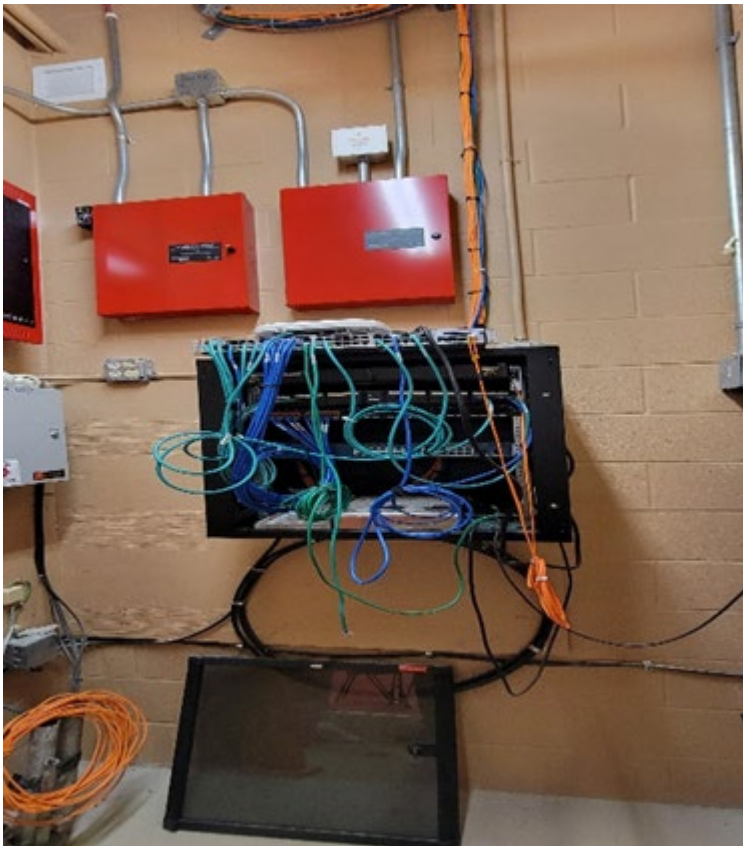
BREWSTER IDF 2



BREWSTER IDF 4



BREWSTER IDF 6



BREWSTER IDF 7



LINCOLN IDF 4



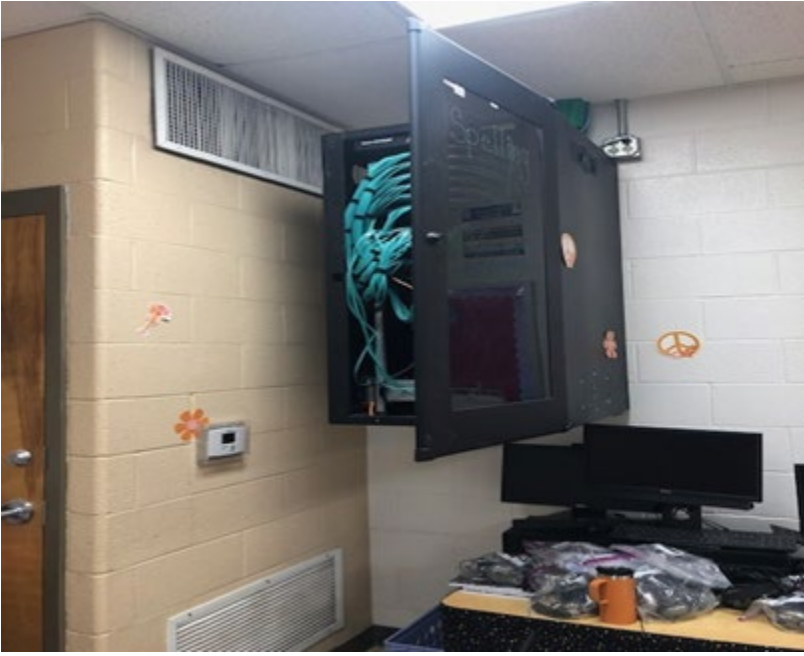
LINCOLN IDF 2



LINCOLN IDF 5



JFK IDF 1



TRUMAN IDF 1

